

Information on the WIDA Alternate ACCESS



What is the WIDA Alternate ACCESS?

The WIDA Alternate ACCESS is an assessment for English learners with the most significant cognitive disabilities. It measures English language skills in listening, reading, speaking, and writing as described in the WIDA English Language Development (ELD) standards. These standards have been adopted by Minnesota and address the language demands of the state's academic content standards.



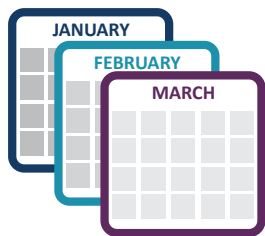
Who takes the WIDA Alternate ACCESS?

English learners who meet specific eligibility requirements documented on their Individualized Educational Program (IEP), and who are enrolled in Minnesota districts and charter schools, take the WIDA Alternate ACCESS.



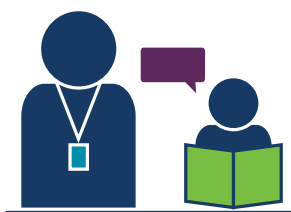
Why do students take the WIDA Alternate ACCESS?

The WIDA Alternate ACCESS gives students the opportunity to demonstrate the English language skills they have been learning and practicing in the classroom. Teachers can use the results to inform decisions about individualized language development and to determine continued eligibility for services provided in a language instruction educational program. Schools can use the results to help monitor their success in meeting the needs of multilingual learners. Families can use the results to support their child.



When does the WIDA Alternate ACCESS happen?

The WIDA Alternate ACCESS is taken every year until the student is exited from their language instructional educational program. The test is administered late January through late March.



How do students take the WIDA Alternate ACCESS?

The WIDA Alternate ACCESS is a paper test. Students will take the WIDA Alternate ACCESS individually with a teacher.